

Congregation B'nai Torah - Celebrating Over 25 Years Together

# TORAH TIMES

September 2024 28 Av - 27 Elul

## Inside this issue:

|                                    |           |
|------------------------------------|-----------|
| Cover Page                         | 1         |
| Presidents' Message                | 3-4       |
| Rabbi Kane's Message               | 6         |
| PSA Announcements                  | 16&21     |
| Religious School Report & Pictures | 10-14     |
| Sisterhood & Men's Club News       | 15&17     |
| Upcoming Event Flyers              | 7-9,18-20 |
| Donations and Member News          | 22-24     |
| Announcements & Ads                | 25        |
| Upcoming Events Calendar           | 26        |



## High Holiday Season is here!

**The first thing we can do is the most Jewish activity...let's eat together!**

**On Friday, September 20 at 6 PM, we will have a brief service followed by a Welcome Back Festive Chicken and Kugel Dinner. There is a Rumor of Chocolate Dessert! See the Flyer inside to see who comes free!**

**On Saturday, September 28, we will join the other members of the Jewish Community to enter the High Holiday Season with Selichot at Temple Beth Shalom 7 PM. This will be an extraordinary gathering for talk, prayer and dessert! If you would like to meet Rabbi Kane for dinner beforehand, text or call 386-872-8787.**

**What's that we smell? It's the delicious scent of the Ritual Committee working on the High Holiday honors! We will send your freshly prepared honors out as soon as they are ready.**

**Please see the Rosh Hashanah Week Services Schedule on the next page.**



## **ROSH HASHANAH WEEK SERVICES**

### **High Holidays 5785**

#### **October**

|     |   |          |                                                   |
|-----|---|----------|---------------------------------------------------|
| Wed | 2 | 7:00 pm  | Erev Rosh Hashanah                                |
| Thu | 3 | 9:00 am  | 1st Day Rosh Hashanah Morning Service with Shofar |
|     |   | 4:30 pm  | Tashlich and Shofar at Fortunato Park*            |
| Fri | 4 | 9:00 am  | 2nd Day Rosh Hashanah Morning Service with Shofar |
|     |   | 7:30 pm  | Shabbat Shuvah Evening Service                    |
| Sat | 5 | 10:00 am | Shabbat Shuvah Morning Service                    |
| Sun | 6 | 1:00 pm  | Memorial Prayers with Cemetery Visit              |

**WISHING EVERYONE A SWEET NEW YEAR!**

\*Especially Family Friendly



## The Presidents' Message



My Fellow Congregants and Rabbi Kane,

As I move into my fourth month of the presidency here at B'nai Torah, I am moved by the acts of kindness and support you have all shared, and for that I am grateful.

I hope you are all doing well as we move closer to the High Holidays and the end of the Jewish Year 5784. What an eventful year it has been.

August was a busy month for all, with events that are bringing the Jewish Community together on many fronts. Most notable the Shalom School Open House, a collaborative effort between Congregation B'nai Torah and Temple Beth-El, Lunch and Learns resumed, the Lunch and Legendary Music Show with a notable attendance and most important Rabbi Kane's Birthday Celebration, a true once in a lifetime event. In addition, there were multiple committee meetings, all planning their strategies for future events and fund raising, with more to come.

Special thanks to Jerry Liebman, who was responsible for the Legendary Music Show so many people enjoyed. When you mix Lea and the Kitchen Angels with genuine New York Bagels, you know that it wasn't just the music that was legendary.

Thanks also to Virginia Horowitz, who has volunteered many hours to help Helen & Rabbi launch Shalom School. She and her husband, Larry, our former Treasurer, devoted many days to the CBT family. We wish them good luck and good health on their move to France.

Our visiting & membership Committees made great strides this spring and summer thanks to Melanie Shiffman and the other volunteers.

Don't forget to check the Men's Club and Sisterhood pages for exciting events!

**Continued on next page**

Look forward to seeing you at services or at one of our functions and remember if you find it in your heart to volunteer, to make a difference, please step up and let the answer be yes, you won't be sorry, you will be performing the Mitzvah.

This is extremely important message to everyone, Congregation B'nai Torah needs your support to continue to succeed. Please take a moment and bring your dues up to date, to those that are current much appreciated. I am also happy to assist and discuss with you any special situations.

We are in the process of cleaning up and enhancing our landscaping before the High Holidays; B'nai Torah's Sisterhood has generously donated \$5,000 to make this happen, for which we are extremely grateful.

In addition, we will be replacing the roofs on the School Building and on the Sanctuary this year with a cost of \$29,000, so your dues are important and essential.

\* \* \* \* \*

As Elul is the last month in the Jewish yearly cycle before Rosh Hashanah, Elul is viewed as a month of reflection on the previous year and looking forward to the next year. With this focus, Elul is regarded as a month of Teshuva, forgiveness and beginning with a clean slate.

According to Kabbalah, a person's vessel for receiving energy in the coming year is based on that person's consciousness during the last month of the closing year. By taking the time in the month of Virgo (Elul) to pay attention to details, get in touch with our inner nature, and notice the effect our behaviors have on others, so that we can ensure that our New Year will be filled with the right energy and the right situations. A time of Transformation.

I would like to share a few of the areas that I am focusing on in the month of Elul to bring more kindness and love into the world - I will be practicing active listening, resist interrupting when you are sharing your thoughts and opinions. plus maintain eye contact and really listen. - I will be taking note of one improvement in someone close to me and letting them know that I have noticed the change. - I will identify at least one person that I have hurt in my life. Feel the pain I caused them and, in my mind, and heart, ask the person to forgive me. If it feels right, I will contact that person and apologize. - Last, but not least, I will do an act of sharing without making it known that I am the one responsible.

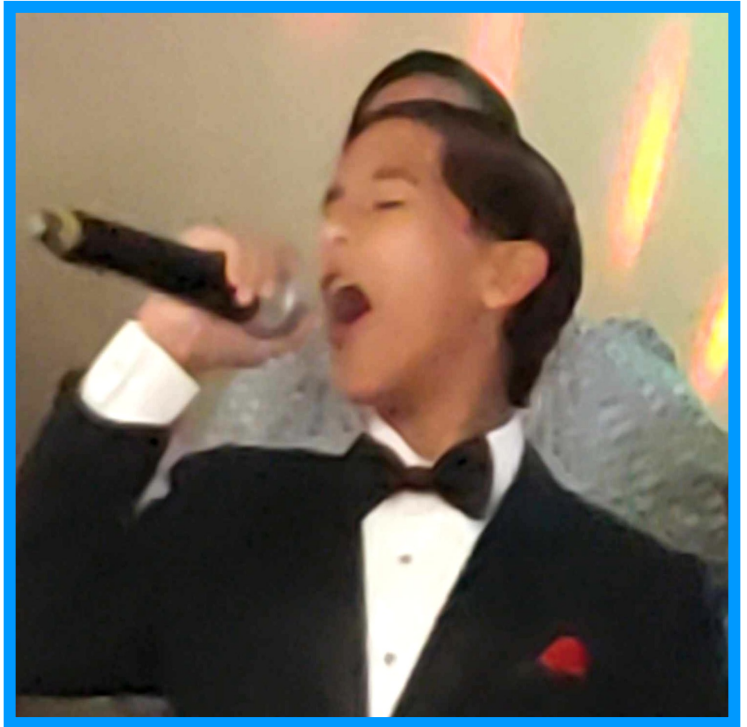
With compassion, mercy, intent, and love, wishing your health and prosperity .

Howard Silverstein, President

**HowardHeyHeyAyin1@gmail.com**

815-980-7007

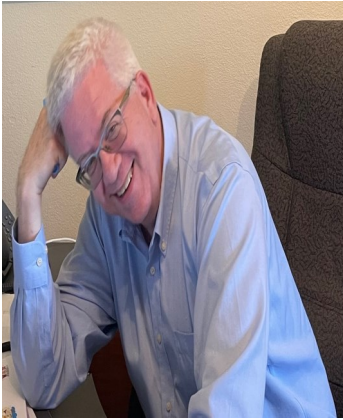




**SWINGING AND SINGING WITH  
SAMMY ROMAN & JUSTIN**



## A Message From Rabbi Kane



**From the desk of my colleague, Rabbi Neil Cooper  
via [MyJewishLearning.com](http://MyJewishLearning.com):**

### **Note to Self,**

Each year you use the High Holidays as a reminder to take stock of the year which has passed. What has occurred? How did you grow? What has changed? Knowing how busy and increasingly forgetful you are, I take this opportunity to remind you not to overlook three moments:

Reading an EKG in his office, my doctor said to me, “You may have an arrhythmia. You need to see a cardiologist.” Several doctors and two stress tests later, the results came back. Your heart is strong. No arrhythmia. Do you remember how you felt upon receiving that news? You said, “I dodged a bullet.”

As you drove across that intersection, a car, coming from the driver’s side of your car, sped up to run the red light. His car missed hitting yours by a fraction of a second. Don’t forget what you said: “I could have been killed!”

Your daughter got married. As you stood with her beneath her chuppah (just before you started crying), do you recall what you thought? You thought, “I can’t believe this is happening. She is so beautiful. I never thought this day would come!”

Carry these moments with you as you cross over into the new year. Remember how fragile and tentative your life is. A diagnosis. A speeding car. Your life could have ended. Your daughter’s wedding. Your year has been filled with blessings of life, health and unparalleled joy.

Dear Self, don’t forget to be grateful. Don’t forget to thank God. You deserved none of the above. Many worthy people have not been so blessed. These were gifts for which you must give thanks.

Just thought I would remind you,

Me

Worthy thoughts from a spiritual leader, indeed.

**Rabbi S. David Kane**





# **Welcome Back Shabbat Dinner**

**Friday, September 20th 7:00 PM  
after Services featuring festive  
chicken, delicious Kugel, super  
sides & delicious dessert.**

**Religious school students & kids under  
5 FREE — Kids 5—12—\$8 and**

**Adults age 13 to 103—\$15**

**RSVP to 386-672-1174 or  
[cbtemail@mybnaitorah.org](mailto:cbtemail@mybnaitorah.org)**

# Order your Rosh Hashanah Apples & Honey today!



*Proceeds Benefit the Shalom School*

**\$18.00 per bag**

*Each bag contains 2 jars of honey & 4 seasonal apples*

Payment and order form (below) must be received  
**by Saturday, September 28.**

Please make checks payable to Shalom School, and specify if you would like to pick up at TBE or CBT.

Orders can be picked up between September 29 and October 2

**This is one of the school's largest fundraisers, and the proceeds from this initiative help support our educational programs.**

---

Name \_\_\_\_\_

Phone \_\_\_\_\_

Email \_\_\_\_\_

Quantity: \_\_\_\_\_ Gift: Y/N Pick up Location: TBE/CBT

Gift for \_\_\_\_\_

Message \_\_\_\_\_



# Reverse Tashlich

The Shalom School, Temple Beth-El and  
Congregation B'nai Torah are joining forces  
to "Repair the Sea"!

We are meeting at  
Andy Romano Park  
Sept. 29, at 1:00 pm

This is a Global Waterfront Clean-Up!  
Please plan to join us! Even if you don't walk the  
beach you can help out at the pavilion!

You need to register on the Tikkun HaYam  
website (or call Natalie at 386-675-6615) to  
let them know that you are joining this  
world-wide effort!

## To register:

1. go to RepairTheSea.org
2. click the big blue button Reverse Tashlich
3. scroll down the page, and click on the yellow  
button: Join a Team
4. In the search by location box, type Shalom  
School
5. click on the underlined link, and complete the  
registration form



REPAIR THE SEA  
Tikkun HaYam



# Congregation B'nai Torah Religious School Report

By Helen Farb



After much hard work and brainstorming, this year begins a new era as CBT and TBE combine Sunday Schools. We have decided to call the merged classrooms "The Shalom School." This semester will be held at Temple Beth-El, and we will host the 2nd semester.

On Sunday, August 18 we had our first joint Religious School Open House. The Open House was a wonderful fantastic event! There were approximately 50 children in attendance and all the parents participated too. With a theme of Shabbat, students made challah covers, Kiddush cups, challahs, clay candle holders and Tzedakah boxes. At the end, we all gathered with Rabbi Kane and Trienah Meyers to sing together and learn some new Shabbat songs.

In addition to Rabbi Kane, our own Channah Zimmermann will be one of the teachers this year, part of an all professional staff.

Rabbi Rob Lennick was there representing Jewish Federation and presented a check for \$8,500.00 to help defray some expenses including security and tuition for scholarship students. Many, many thanks go to Virginia Horowitz for developing the materials and stations for the event. She also spent many hours helping develop the curriculum. Her hard work was appreciated. We will miss her as she leaves us for France.

We also have to thank Temple Beth-El and their School Administrator, Dr. Jonathan Frankel, for their warm welcome. Their presidents made all the dough and baked all the challahs that the students made. A very big job!!

[Kid and Tot Shabbat](#) : Friday, September 6: Rabbi on the rug 6:00 Dinner served at 6:30 [Notice we have changed these times](#)

[Religious School](#): Sunday September 8 & 29 at Beth-El from 9-12:00

Welcome back to a new school year!

Miss Helen



**Four pages of photos from the Shalom School  
Kick Off on August 18th**



















## Sisterhood in the News

During the month of August, Sisterhood held their annual board meeting. At this meeting, we are proud to say the Board came up with a very exciting year. This year's program will be presented at the B'nai Torah Sisterhood Opening Luncheon, on Tuesday September 17<sup>th</sup>. Did you know that we are getting ready to start the Days of Awe, the High Holidays. A time of self-reflection, personal growth, and accountability that mark the year in a meaningful way. While you are reflecting over the past year, one way to continue to show your support is to consider joining. Sisterhood has continued to support our congregation by donating reserved funds to ensure our synagogue's grounds remain safe and beautiful for everyone to enjoy.

All it takes is a single payment of \$36.00 annually. There are several ways to join; submit your payment either online at [mybnaitorah.org](http://mybnaitorah.org) website, mail it, or drop it off at the temple office from 9:00am-1:00pm Monday-Friday.

Here is a peak at the beginning of our year.....

**Tuesday September 17<sup>th</sup>** @ 11:30 am - Sisterhood Opening Luncheon at DB Pickles Restaurant at 400 South Nova Road, Ormond Beach. (Reservations require

**Friday September 20<sup>th</sup>**, Sisterhood is preparing CBT's annual Fall/End of Summer Dinner

**October 17<sup>th</sup>**, Sisterhood's Annual Mah Jongg Tournament, will be held at Temple Beth El.

As you can see, we are starting off quite well. The opening luncheon reservation is secured with your payment of \$25. It must be received by Sunday 9/15/2024. This includes a choice of 4 entrees, beverage, dessert, and your gratuity. Our very own Marianna Machacek will speak briefly about her childhood in Europe, and you will also hear from our Board about the upcoming year for your vote.

Just remember that if you are not present and do not VOTE your voice will not be heard.

PLEASE help our joint FUNdraiser with Temple Beth EL, we will receive a proportional take of all monies raised at the tournament. So, what does that mean? If we have 60% of the attendance, we collect 60% of the revenue. If you think your president of sisterhood is not a little competitive than you do not know Barbara Kusnick. Come meet her at the opening Luncheon and hear about what the monies raised from the Tournament can do for our Congregation.

**Shana Tovah**

**Barbara Kusnick, Sisterhood President**

**Come join the fun**

[Download the CBT Sisterhood Membership Application](#)

We need volunteers for the  
Membership and Visiting  
Committees.

Please consider volunteering a couple of hours a week or more to visit congregants at nursing homes, the hospital, or their homes. We also need volunteers for the Lunch Buddy Program to take older congregants out for coffee or lunch. We also need volunteers to write welcome cards for new members, to call potential members, to call members who are sick, and to write get-well cards.

If interested, please call Kay at the  
CBT Office at (386)672-1174.

**WE NEED  
VOLUNTEERS**



# MEN'S CLUB®

## Men's Club Upcoming events:

Men of CBT, our annual membership drive continues. If you haven't done so already, we need you to complete the application. Membership is \$36/year. It would be great to have everyone complete the application and pay before Yom Tov. In case you have misplaced it, here's the link...

<https://forms.gle/uffvn1aGmzsEtubC8>

We have an exciting year planned! Please mark your calendars for these upcoming events (with more to come!)

- Schnapps in the Sukkah, Sunday, October 20th 6:30 pm
- Workshop: 'Sons of Srol' - a new book co-authored by our congregant Ray Leonard. Open to all members of the Congregation.  
October 27 10:00 am.
- Brunch and Shoot at Bunnell Range, Sunday, Nov 17 10:00 am.
- World Wide Wrap, Sunday, February 9, 10:00 am.

You can always check the Men's Club page on the CBT website: <https://mybnaitorah.org/mens-club/>

Do you have a great idea for the Men's Club? Contact me:

314-604-5618

[cbtobmensclub@gmail.com](mailto:cbtobmensclub@gmail.com)

Thanks!

**Mark Givarz, CBT Men's Club President**  
**314-604-5618 [cbtobmensclub@gmail.com](mailto:cbtobmensclub@gmail.com)**

Here's the link to submit: <https://mybnaitorah.org/mens-club-donation/>

Let me know if you have any ideas for the Men's Club.





## **Come Enjoy JPGT**

**Great company, conversation,  
food and friendships!**

**All Welcome — Bring a Friend!**

**THIS MONTH'S BREAKFASTS**

**Thursday, Sept. 5th and 19th at 9 AM**

*New Location*

**Brunch**

**2071 LPGA Blvd #400**

**Daytona Beach, FL 32117**





# SELICHOT

**With an interactive evening of  
Havdalah, Reflection & Prayer**

**Saturday, September 28 at 7pm**

**Temple Beth Shalom**

**40 Wellington Drive**

**Palm Coast, FL 32164**

**Join Temple Beth Shalom, Congregation  
B'nai Torah and Temple Beth El for a  
community Selichot**



# MAH JONGG TOURNAMENT



Sponsored by

Congregation B'nai Torah and Temple Beth El

**WEDNESDAY, OCTOBER 23, 2024**

at

Temple Beth El

579 N. Nova Road

Ormond Beach, Florida 32174

**CASH PRIZES AND RAFFLE PRIZES!**

**COME JOIN THE FUN!**

## Schedule

10:30 AM- 11:00 AM – Registration    11:00 AM – Tournament Starts

**NO WALK-INS**

Donation - \$36 your check is your reservation – Closing date for reservation is Oct. 16, 2024

Your donation includes lunch, drinks and wonderful desserts!

To register, please fill out the form below and enclose it with your \$36.00 check

Please make your check out to CBT Sisterhood

Mail to: Lea Moskowitz, 2300 N. Atlantic Av #1403, Daytona Beach, FL. 32118

Questions Call: Sema (386) 264-1508

**ENTRY DEADLINE — OCTOBER 16, 2024**

Cut here \_\_\_\_\_enclose lower portion\_\_\_\_\_

Name \_\_\_\_\_ E-Mail \_\_\_\_\_

Address \_\_\_\_\_ Phone \_\_\_\_\_

City \_\_\_\_\_ Zip \_\_\_\_\_ CBT

Check All that Apply

\_\_\_\_\_ I will bring my Mah Jongg Set and receive an additional raffle ticket for a door Prize

\_\_\_\_\_ I will bring a card table and receive an additional raffle ticket for a door Prize

**All Mah Jongg Players are invited. Please join us for a fun filled afternoon!**



**The Social Committee needs your help.**

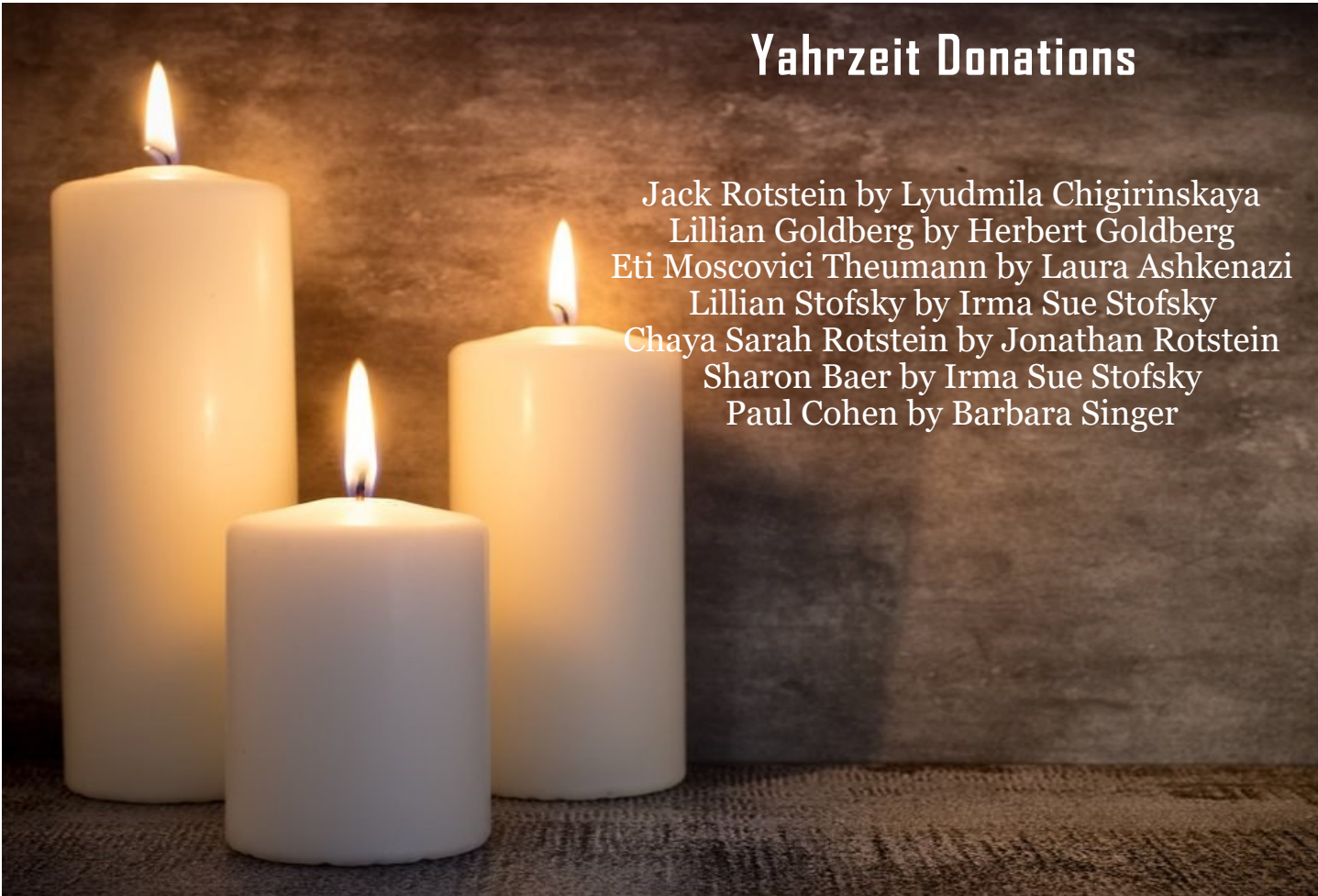
**We are looking for volunteers for social events, to call members and potential future members to inform them of upcoming events.**

**CBT members! I am looking to assemble a committee for the Jewish Women's Retreat taking place early next year.**

**If interested, please contact Melanie Shiffman at (386)506-9494.**



## Yahrzeit Donations



Jack Rotstein by Lyudmila Chigirinskaya  
Lillian Goldberg by Herbert Goldberg  
Eti Moscovici Theumann by Laura Ashkenazi  
Lillian Stofsky by Irma Sue Stofsky  
Chaya Sarah Rotstein by Jonathan Rotstein  
Sharon Baer by Irma Sue Stofsky  
Paul Cohen by Barbara Singer

### *Thank You for Your Donations to The Rabbi Fund*

*Robin & Ira Freedman*

*Linda Kwastel*

*Sylvia & Morris Levy*

*Bertha Berdichevsky*

*Leonard Mandell*

*Dr. & Mrs. Michael Diamond*

*Lisa & Dr. Richard Rhodes*

*Ruth Cohen*

*Bari & Stuart Amols*

*Dr. Jonathan Frankel*

*Kathy & Linden Gould*

*Gail & Zev Cohen*

*Barbara & Barry Kusnick*

*Jerry Epstein*

*Regina Cochran*

*MaryAnn & Steven Serkin*

*Anita Hochman*

*Marianna Machacek*



**SEPTEMBER 2024**



**Happy Birthday**



2 Lisa Ravede  
3 Laura Ashkenazi  
4 Douglas McEwen  
5 Robin Weiss  
9 Chick Hechtman  
13 Don Holbert  
15 Larry Cooperman  
16 Stuart Amols

17 Christopher Weiss  
19 Dr. Alan Goldsmith  
20 Jerry Leibman  
21 Scarlett Weiss  
23 Scott Davis  
26 Valerie Kisseloff  
28 Ellen Rabin  
29 Betty Berdichevsky

**Happy Birthday from Lea & Charles Moskowitz to Lisa Ravede, Laura Ashkenazi, Douglas McEwen, Robin Weiss, Chick Hechtman, Don Holbert, Larry Cooperman, Stuart Amols, Christopher Weiss, Dr. Alan Goldsmith, Jerry Leibman, Scarlett Weiss, Scott Davis, Valerie Kisseloff, Ellen Rabin & Betty Berdichevsky**

**HAPPY ANNIVERSARY!**

2 Valerie & Jared Kisseloff

13 Lorna & Charles Beck  
15 Adrienne & David Offenber

### **EXPRESSIONS OF APPRECIATION**

**Lea Moskowitz thanked all her kitchen angels for their help and their creative food trays.**

**Rabbi Kane thanks everyone who helped make his 65th Birthday his best birthday celebration ever! Everyone had a wonderful time and enjoyed all the food!**

**Rosh Chodesh Elul for Hebrew Year 5784 will be celebrated from sundown on Monday, 2 September 2024 and ends at nightfall on Wednesday, 4 September 2024**



## **BE A CBT MITZVAH MAVEN!**

**Have an extra hour (or two)? Volunteer!!!**

**We have several homebound congregants who have found a visit from a CBT Family Member is one of the best ways to bring a smile to their faces.**

**Interested in spreading some sunshine?**

**Contact Valerie Kane, our interim Chair of the Visiting Committee at 386-871-9909. You can help assist the elderly members of our congregational family. So please consider joining us with this important mitzvah!**

## **AMERICAN JEWISH COMMITTEE**

**Sharing a link to AJC's website:**

**Resource for reporting Antisemitism to Federal Agencies, Law Enforcement, and Social Media Guidance  
(<https://www.ajc.org/ReportingAntisemitism>)**

## **SPREAD THE NEWS**

**Congratulations to Anna Chuven starting her Marine Biology Major at Florida Southern College.**

**We wish you an entire year of luck and good health.**

## **Good News!**

**There is still room on the Membership Committee for a couple of volunteers. Come join us for a Nosh and bring your best ideas.**

**Call Valerie Kane 386-871-9909**

**Seabreeze**  
**FINE JEWELRY**

*Al, Cherie & Lyle Trachtman*  
Graduate Gemologist - GIA

**(386) 252-6135**  
529 Seabreeze Blvd.  
Daytona Beach, FL 32118  
SeabreezeJewelry.com

**THERESA'S**  
ESTD 1982

**Theresa Klaus**  
Owner/Operator

Full Service of  
Imports and Domestic  
Specializing in **HONDA**  
Acura • Toyota • Nissan

388 N. Nova Road  
Daytona Beach, FL 32114  
Email: [theresasgarage@yahoo.com](mailto:theresasgarage@yahoo.com)

Ph 386-675-6997  
Fax 386-675-6998

**HONESTY      INTEGRITY      HARD WORK**

**PH: 386-677-8818    [ormondshoerepair.com](http://ormondshoerepair.com)    BRIAN FREEDMAN**  
E-mail: [OrmondShoeRepair@gmail.com](mailto:OrmondShoeRepair@gmail.com)    Owner/Cobbler

**IF THE SHOE FITS**  
**Ira & Son SHOE REPAIR**  
**REPAIR IT**

Like us on      

298 S. Nova Road, Suite A  
Ormond Beach, FL 32174  
CAPITAL PLAZA

**CUSTOMER'S HOURS**  
Mon.-Fri. 8:30 a.m. - 5:00 p.m.  
Sat. 9:00 a.m. - Noon

**J. Richard Rhodes, MD**  
Orthopaedic Surgeon  
UF Health Orthopaedics – Medical  
Center of Deltona  
University of Florida

**HALIFAX HEALTH**

**UFHealth**  
MEDICAL CENTER  
OF DELTONA

386.457.6384 (O)  
386.457.6385 (F)  
**UFHealth.org**

3400 Halifax Crossing Blvd., Suite 200  
Deltona, FL 32725

## MEMORIAL BOARD

The Sanctuary of Congregation B'nai Torah houses impressive memorial boards. Memorial plaques with the names of our dearly departed loved ones adorn the boards. A brass memorial plaque with the name of your departed loved one inscribed thereon can be added to the Memorial Board for a donation of \$300.

## PLEASE SUPPORT OUR ADVERTISERS!

Supported in part by the Jewish Federation and the Jewish Federation Endowment Fund.

**Mt. Sinai Cemetery** 

**340 White Street**  
**Daytona Beach, FL 32114**

Find us @ [mtsinaicemeterydb.org](http://mtsinaicemeterydb.org)  
Or on Facebook [mtsinaidaytona](https://www.facebook.com/mtsinaidaytona)  
For More information email: [mtsinaierh.com](mailto:mtsinaierh.com)

**TRANSMISSIONS**  
**AAMCO**  
**TOTAL CAR CARE**

**Michael Tortora**  
General Manager  
**386-253-7668**

[mtortora@aamco1.com](mailto:mtortora@aamco1.com)  
[www.aamcodaytona.com](http://www.aamcodaytona.com)

Serving You Since 1963

134 Mason Avenue  
Daytona Beach, FL 32117

## TREE OF LIFE

The Sanctuary of Congregation B'nai Torah houses an impressive Tree of Life, donated by Dr. & Mrs. Richard Rhodes.

Stylized "Leaves" or "Foundation Stones" celebrate any occasion and will be engraved with the name of the celebrated person(s) and any other appropriate information.

A leaf can be added for a donation of \$118. For extra special occasions, a limited number of "Foundation Stones" are available for a donation of \$500.

Please call the office at **(386) 672-1174** if you would like more information about either the Memorial Board or the Tree of Life.





## Upcoming Events

**Shabbat services start at 7:00 PM each Friday**

### RESERVE THESE DATES

|     |                 |          |                                            |
|-----|-----------------|----------|--------------------------------------------|
| Mon | Sept 2          |          | CBT Office Closed for Labor Day            |
| Thu | Sept 5, 19      | 9:00 AM  | JPGT Breakfast, BRUNCH DAYTONA, LPGA       |
| Fri | Sept 6          | 6:00 PM  | Kid & Tot Shabbat                          |
| Sun | Sept 8, 29      | 9:00 AM  | Shalom School, Temple Beth El              |
| Tue | Sept 10, 17, 24 | 7:00 PM  | Bible Study with Rabbi Merrill Shapiro     |
| Mon | Sept 16         | 7:00 PM  | Next CBT Board Meeting– In Person          |
| Tue | Sept 17         | 11:30 AM | Sisterhood Opening Luncheon, DB Pickles    |
| Fri | Sept 20         | 7:00 PM  | Welcome Back Shabbat Dinner after Services |
| Thu | Sept 26         | 11:00 AM | Rosh Hashanah Senior Lunch, Temple Beth El |
| Sat | Sept 28         | 7:00 PM  | Community Selichot, Temple Beth Shalom     |
| Sun | Sept 29         | 1:00 PM  | Reverse Tashlich, Andy Romano Park         |

### Officers and Trustees

**President: Howard Silverstein**

**Vice President: Mark Givarz**

**Treasurer: Barbara Singer**

**Secretary: Doug McEwen**

**Trustees: Charlie Moskowitz, Sue Abel, Bonnie Berns, Debra Rodensky, Semareva Friedman, Harriet Fritts, Ken Haberman, Ron Horowitz, Eneida Kwetkus and MaryAnn Serkin**

**Religious School Chair: Helen Farb**

**Sisterhood: President, Barbara Kusnick**

**Men's Club: President, Mark Givarz**

**Past Co-Presidents: Adrienne Cooperman & Robin Freedman**

**403 N. Nova Road  
Ormond Beach, FL 32174  
386-672-1174  
[cbtemail@mybnaitorah.org](mailto:cbtemail@mybnaitorah.org)**

[www.MyBnaiTorah.org](http://www.MyBnaiTorah.org)



MEMBERSHIP FORM (Please Print)



401/403 N. Nova Road, Ormond Beach, FL 32174

Office: 386-672-1174 Fax: 386-672-6834 E-mail: cbtemail@mybnaitorah.org

Website: www.mybnaitorah.org

Family Last Name: \_\_\_\_\_

Home Address: \_\_\_\_\_

City, State, Zip: \_\_\_\_\_

Home Ph: \_\_\_\_\_ Cell Ph: \_\_\_\_\_ Cell Ph: \_\_\_\_\_

I consent to receiving reminders of CBT events via text message \_\_\_\_ Yes \_\_\_\_ No

Email: \_\_\_\_\_ Email: \_\_\_\_\_

Marital Status: \_\_\_\_\_ If Married, Date of Marriage: \_\_\_\_\_

HEAD(S) OF HOUSEHOLD

MALE

FEMALE

First Name

\_\_\_\_\_

\_\_\_\_\_

Date of Birth

\_\_\_\_\_

\_\_\_\_\_

Was Mother Jewish?

\_\_\_\_\_

\_\_\_\_\_

If not, name & city of Rabbi  
who supervised conversion

\_\_\_\_\_

\_\_\_\_\_

Hebrew Name (in English)

\_\_\_\_\_

\_\_\_\_\_

Father's Hebrew Name

\_\_\_\_\_

\_\_\_\_\_

Mother's Hebrew Name

\_\_\_\_\_

\_\_\_\_\_

Was Biological Father  
a Kohen, a Levi or neither?

\_\_\_\_\_

\_\_\_\_\_

Your Level of Jewish Education

\_\_\_\_\_

\_\_\_\_\_



MEMBERSHIP FORM (Please Print)

Occupation/Profession \_\_\_\_\_

Employer/Company Name \_\_\_\_\_

**CHILDREN**

| English Name | Hebrew Name | Religious School<br>Status | Date of Birth |
|--------------|-------------|----------------------------|---------------|
| _____        | _____       | _____                      | _____         |
| _____        | _____       | _____                      | _____         |
| _____        | _____       | _____                      | _____         |
| _____        | _____       | _____                      | _____         |

**Please circle if enrolling children in Religious School**

(Current annual tuition: \$325 for 1<sup>st</sup> child / \$300 for each additional child from same family.  
Family must become a member of the Congregation within a year.)

1 Child      2 Children      3 Children

How did you hear about Congregation B'nai Torah: \_\_\_\_\_

If referred, name of person who referred you: \_\_\_\_\_

Names of family members who already belong to our Congregation:

\_\_\_\_\_

**Please indicate type of membership:**

Family (\$1,200)    Single (\$700)    Associate\* (\$495)    Seasonal (\$Monthly)

\*An Associate Member is a full member of another Jewish Congregation. Please indicate  
your other congregation (name & address) \_\_\_\_\_

\_\_\_\_\_

## MEMBERSHIP FORM (Please Print)

While we always appreciate full dues payment, we understand that it is not always possible. We do, however, request that at least a quarterly payment (25% of annual dues) be submitted along with your Membership Form. Our fiscal year starts on June 1st and ends on May 31st. We expect: (1) dues payment to be paid on a quarterly basis at the start of each quarter; (2) Religious School tuition to be paid at the start of each quarter beginning September 1st; and (3) other financial obligations to be paid as incurred. Monthly payments may be approved if preferred for budgetary reasons.

The undersigned agree that they are responsible for paying any financial obligation associated with membership in Congregation B'nai Torah. It is further understood that should the undersigned resign their membership, they realize that they remain liable for any outstanding debts to the Congregation, including dues accrued until the Congregation receives written notice of the resignation.

\_\_\_\_\_  
Signature

\_\_\_\_\_  
Date

\_\_\_\_\_  
Signature

\_\_\_\_\_  
Date

### Yahrzeits About Which You Wish to Be Notified:

Name: \_\_\_\_\_ Date of death\*: \_\_\_\_\_ Y

Relationship: \_\_\_\_\_ To: \_\_\_\_\_

Name: \_\_\_\_\_ Date of death\*: \_\_\_\_\_ Y

Relationship: \_\_\_\_\_ To: \_\_\_\_\_

Name: \_\_\_\_\_ Date of death\*: \_\_\_\_\_ Y

Relationship: \_\_\_\_\_ To: \_\_\_\_\_

Name: \_\_\_\_\_ Date of death\*: \_\_\_\_\_ Y

Relationship: \_\_\_\_\_ To: \_\_\_\_\_

Name: \_\_\_\_\_ Date of death\* \_\_\_\_\_ Y

Relationship: \_\_\_\_\_ To: \_\_\_\_\_

\* Hebrew month & day; or English month, day, & year – if after sundown circle "Y"

(attach sheet with additional yahrzeits, if needed)



## MEMBERSHIP FORM (Please Print)

Please indicate the Congregational activities in which you are interested in participating:

|                    |                                 |
|--------------------|---------------------------------|
| Sisterhood         | Men's Club                      |
| Budget and Finance | Building                        |
| Chevra Kadisha     | Publicity / Community Relations |
| Fundraising        | Kitchen                         |
| Membership         | Religious School                |
| Ritual             | Social and Events               |
| Youth              | Adult Education                 |
| Leading Shabbat    | Leading Torah Discussion        |

Torah and/or Haftarah Reading